



MARQUEE

WIRELESS SOLUTIONS

Smart City Applications & Solutions

5G and Gov Tech
Athens, Greece
October 25, 2023



Internet Connectivity



Public Services



Smart Water Management



Traffic Management & Navigation



Smart Buildings



Cybersecurity



Urban Planning



Smart Mobility



Environmental Sensors



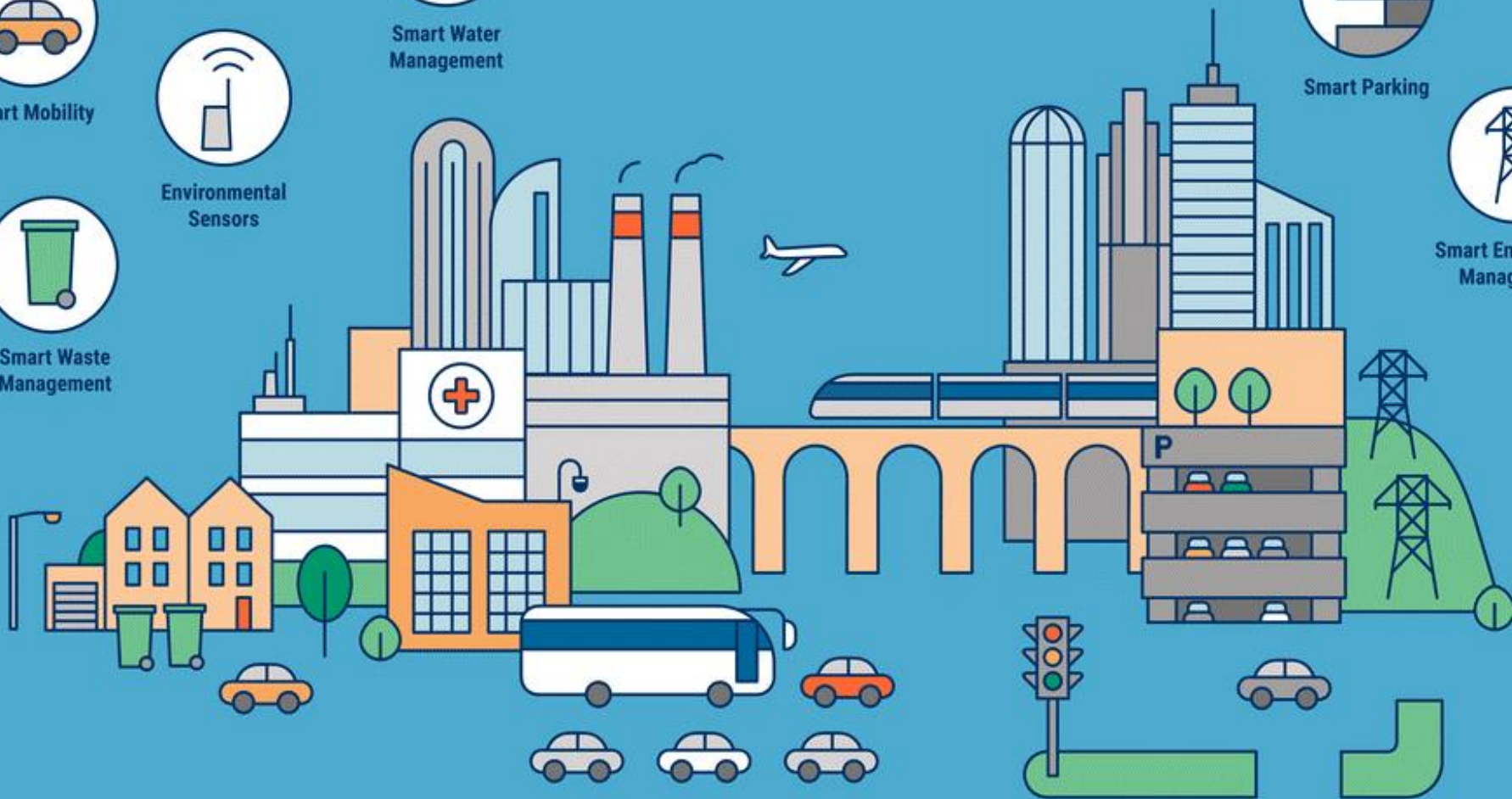
Smart Parking



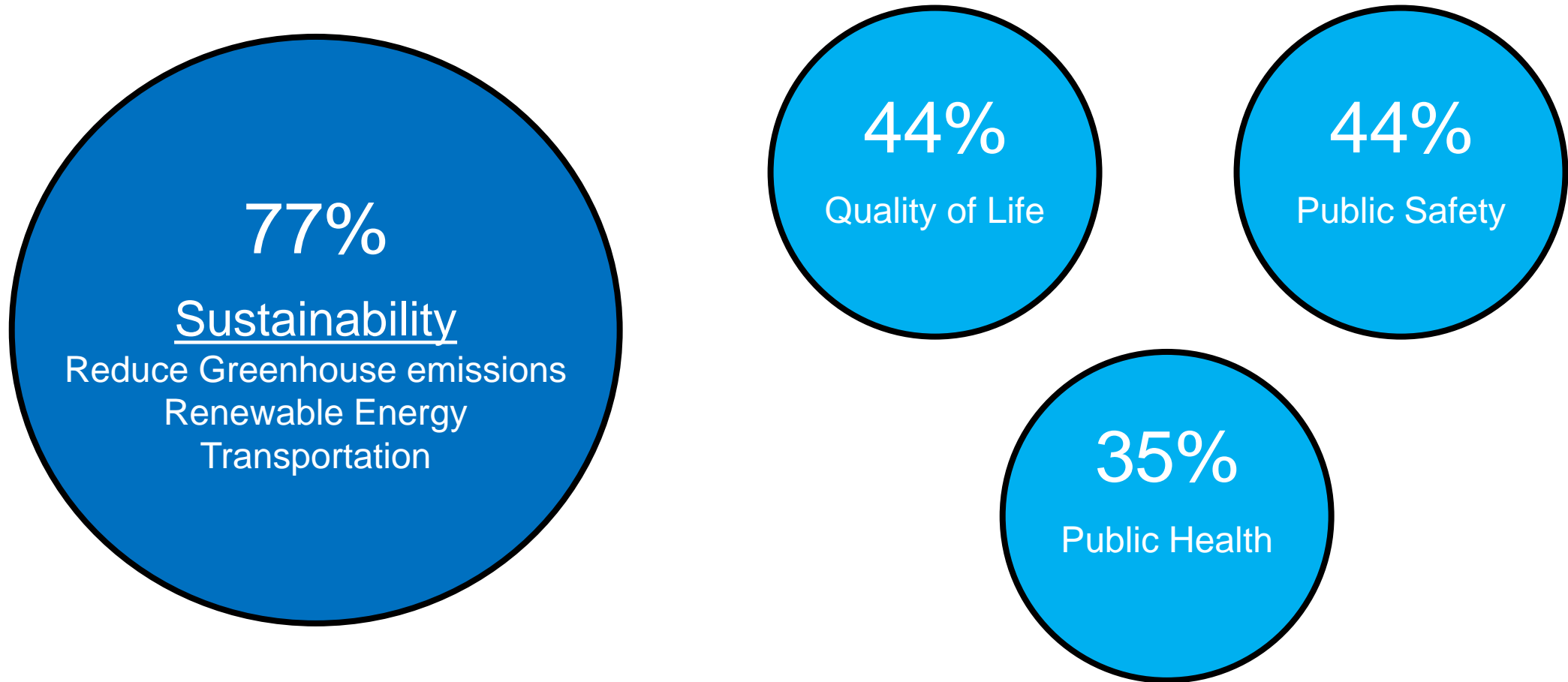
Smart Waste Management



Smart Energy/Grid Management



Smart City demands



Sustainability
Reduce Greenhouse emissions
Renewable Energy
Transportation

44%
Quality of Life

44%
Public Safety

35%
Public Health

Smart City Solutions

Technology/Smart Infrastructure

Network



Devices



Analytics



Users/Beneficiaries

Economic Development

- Connected Communities
- Digital Government
- Open Data
- Civic Engagement
- Workforce Development

Infrastructure

- Smart Lighting
- Smart Waste
- Water Management
- Smart Buildings
- Remote Monitoring

Transportation

- Traffic Management
- Electrification
- Connected Vehicles
- Smart Parking
- Fleet Management
- Autonomous Vehicles

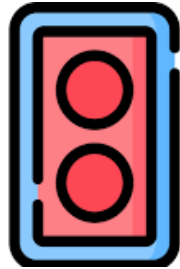
Public Safety

- Video/Data Analytics
- Critical Infra Monitoring
- Environmental Monitoring
- Smart Parks
- Drone Monitoring
- Emergency Management

Street Infrastructure



LED Lights



Photocells



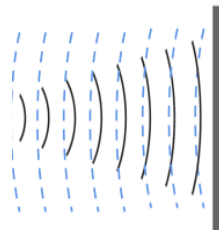
Earthquake
Detection



EV Charging



Digital
Signage



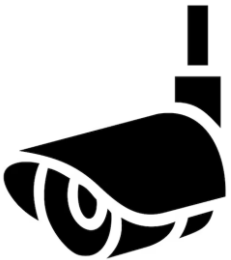
Sound
Detection



Water
Detection



Smart
Mobility



IP Cameras



Image
Analytics

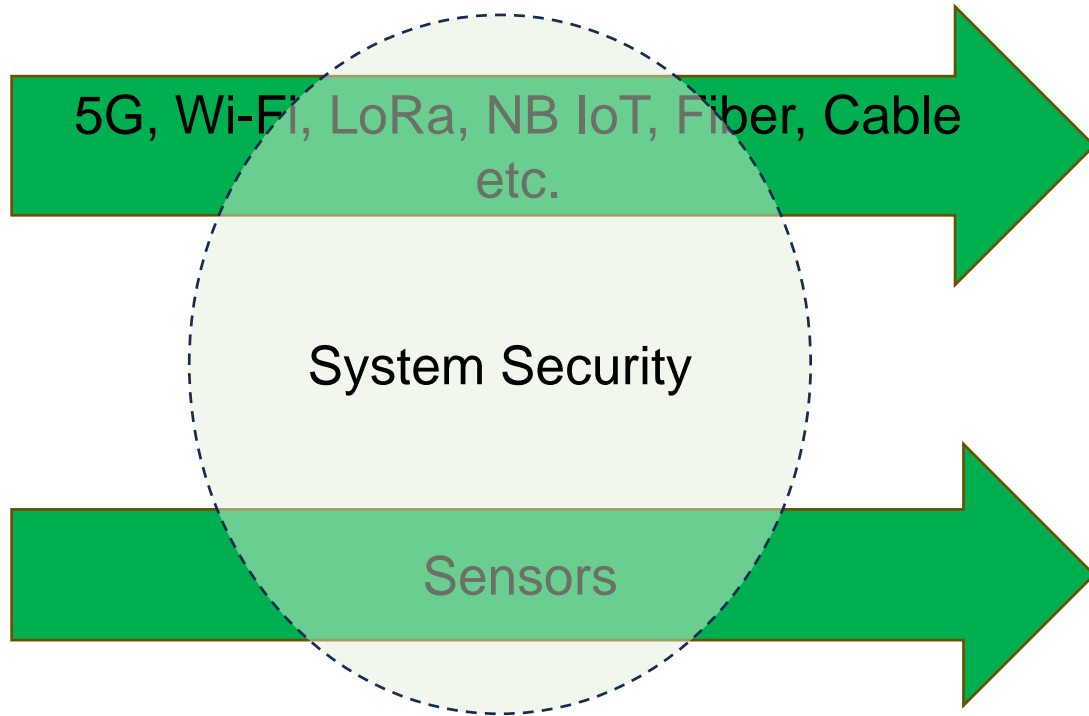


Emergency
Button



Smart
Parking

Technology & Data Analysis



- Massive Data is generated through connected infrastructure and IoT devices
- AI and data analytics turn data to actionable decisions
- Citizen input and real time data are integrated
- Interoperability between systems are becoming adopted
- Involve Network Providers as partners/advisors in discussions/deployments
- Results are assessed and applied

USA Smart City projects



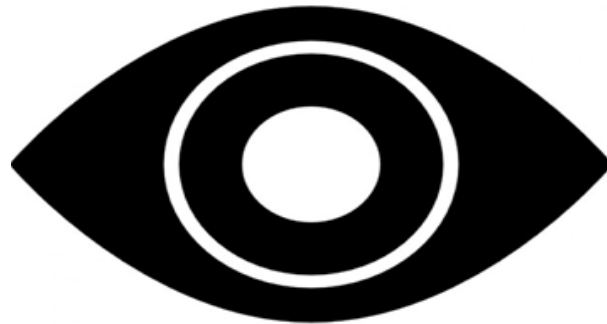
Austin TX, Palo Alto CA, Raleigh NC
Charlotte NC, Washington DC, NY NY,
Pittsburgh PA, Chicago IL



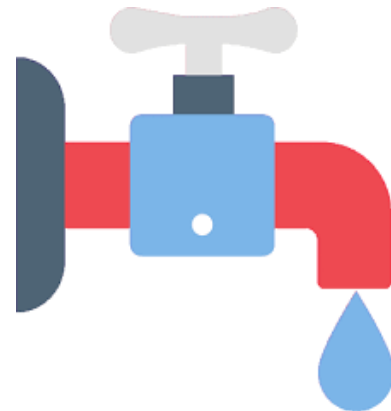
Denver CO, San Jose CA, Chicago
IL
Minneapolis MN, Chattanooga TN,



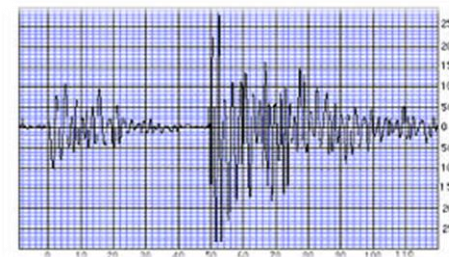
Austin TX, Boulder CO, Boston MA,
San Francisco CA, San Antonio TX,



Little Rock AR, Minneapolis MN,
LA CA, Chicago IL, NY NY, Atlanta
GA



Dallas TX, Seattle WA



Seattle WA



San Francisco

Multi-platform SMARTCELL™



- Platform is Customized to colors & graphics of choice to match the venue and is lit at night

• Smart City features

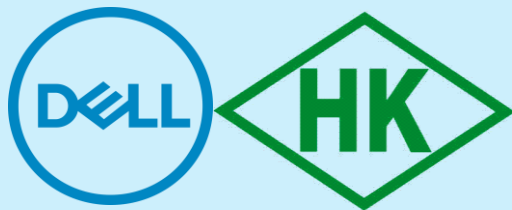
- Cellular Service
- Surveillance (Safety)
- Emergency Button (Safety)
- Wi-Fi (Communications)
- Emergency Station (Safety)
- Smart Sensors (Environmental)
- Beacons (Communications)

• Interactive Kiosk

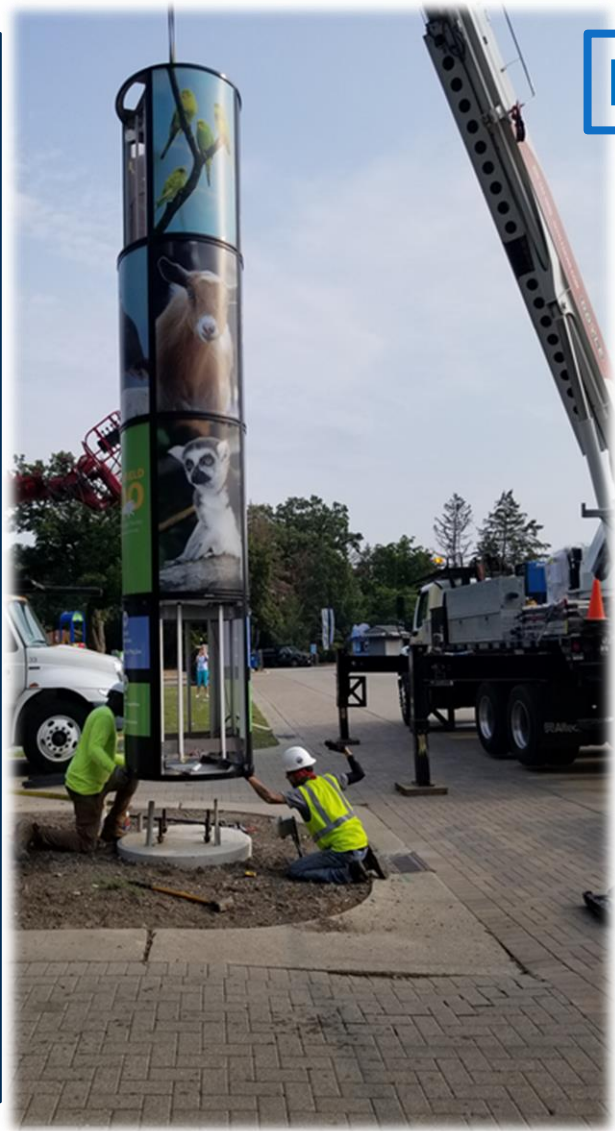
- LCD display
- Venue & Community Information
- Advertising
- Smartphone interactivity

ciena

CORNING



Modular, flexible design



SMARTCELL™ MACRO site

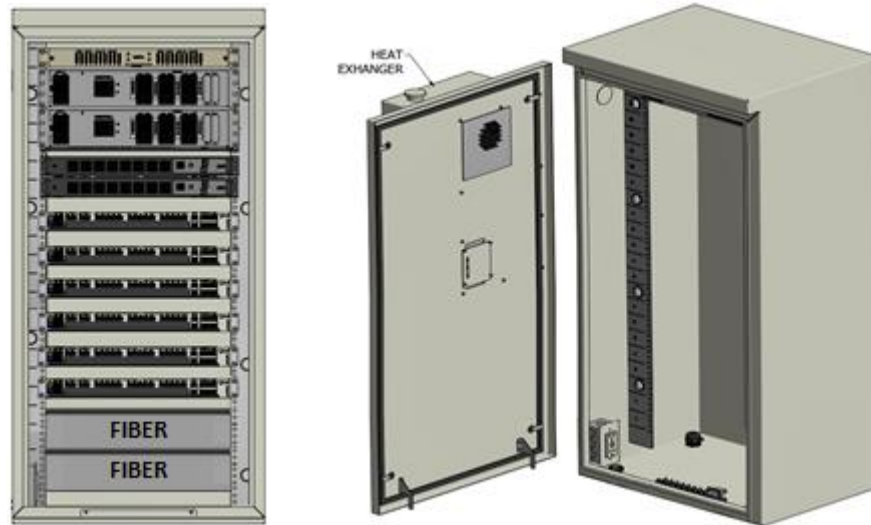
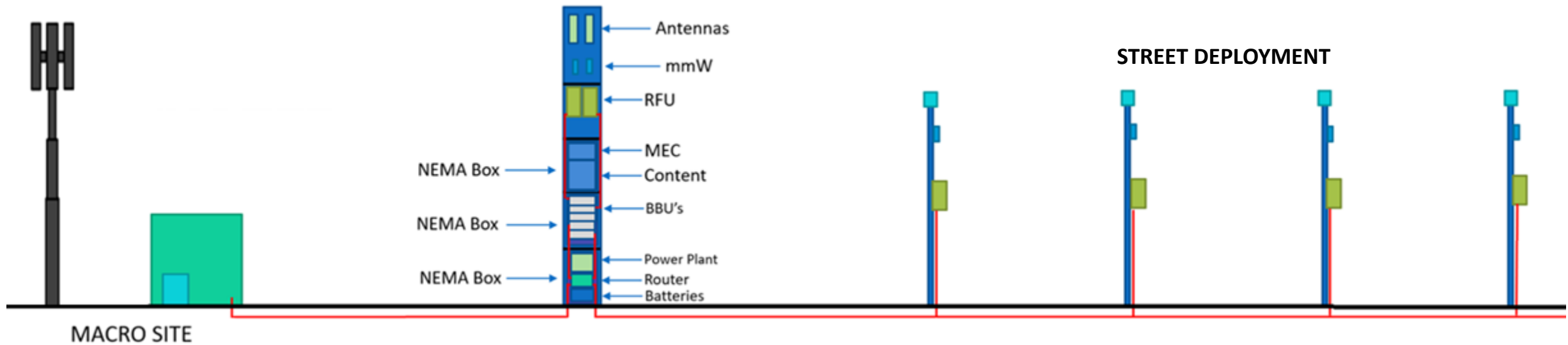
3 sectors, 700/1900/2100 MHz dual frequency Radios, Wi-Fi, Cameras, Sensors



SMARTCELL™ integrated with EV Charging Stations



Street BBU Hotel/Mobile Edge



Expected Latency is less than 2 msec

MEC processing and data storage at the Street Level.

Individual sort-hop Fiber links from the SMARTCELL™ to the Local Small



System Design



PARTNERSHIP is KEY

- Find a partner that is RESOURCEFUL has deep expertise in technology and offers the right connectivity solutions
- Find a RELIABLE partner that can work with other team members to provide essential network infrastructure
- Find a partner that can SCALE quickly to ADAPT to the demand
- Find a partner that is capable in delivering NEXT-GEN SOLUTIONS
- Find a partner that can move data REGARDLESS of technical incompatibilities (software and hardware)

Thank you!

For more information

Contact: Dimitrios Lalos

dlalos@marqueewireless.com

+1 (331) 979-8020

Bio information: https://en.everybodywiki.com/Dimitrios_Lalos